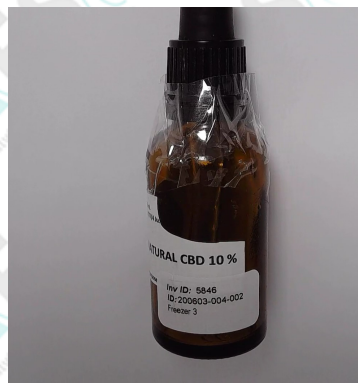


# Certificate of Analysis

**Sample ID:** 200603-004-002  
**Retention Sample ID:** 5,846  
**Client ID:** Nuevida (Pty) Ltd  
**Client Address:** 637 Chroom Str, Elarduspark  
**Batch:** Hemp natural CBD 10%  
**Date Receipt:** 2020/06/04 08:49:15  
**Date Report Released:** 2020/06/10 09:08:04  
**Sample Type:** Liquid  
**Package Condition:** Intact  
**Received By:** PMYBURGH  
**Sample Amount:** 1 gram  
**Tamper Proof:** No

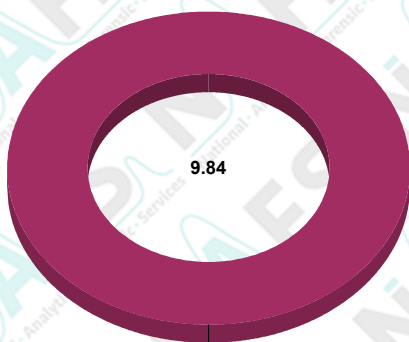


**Test Name:** Potency Cannabis(HPLC) (200603-004-002)

**Specification:** USP Specification (Oral)  
**Test Method:** \*TM006.3  
**Sampling Method:** SH007

Analyte	Results	*Std Dev.	*Safety Limits
CBC	ND % Weight	% Weight	N/A
CBD	8.832 % Weight	+ - 0.201 % Weight	N/A
CBD-A	1.150 % Weight	+ - 0.013 % Weight	N/A
CBD-V	ND % Weight	% Weight	N/A
CBG	ND % Weight	% Weight	N/A
CBG-A	ND % Weight	% Weight	N/A
CBN	ND % Weight	% Weight	N/A
Delta-9-THC	ND % Weight	% Weight	N/A
THC-A	ND % Weight	% Weight	N/A
THC-V	ND % Weight	% Weight	N/A
Total Potential CBD	9.841 % Weight	+ - 0.212 % Weight	N/A
Total Potential THC	ND % Weight	% Weight	N/A

**Analyst:** Alexander Wrbka 2020/06/08 10:07:41



Total Potential CBD  
9.84

■ CBC	0.00
■ CBG	0.00
■ CBGA	0.00
■ CBN	0.00
■ Total Potential CBD	9.84
■ Total Potential THC	0.00
<b>Total:</b>	<b>9.84</b>

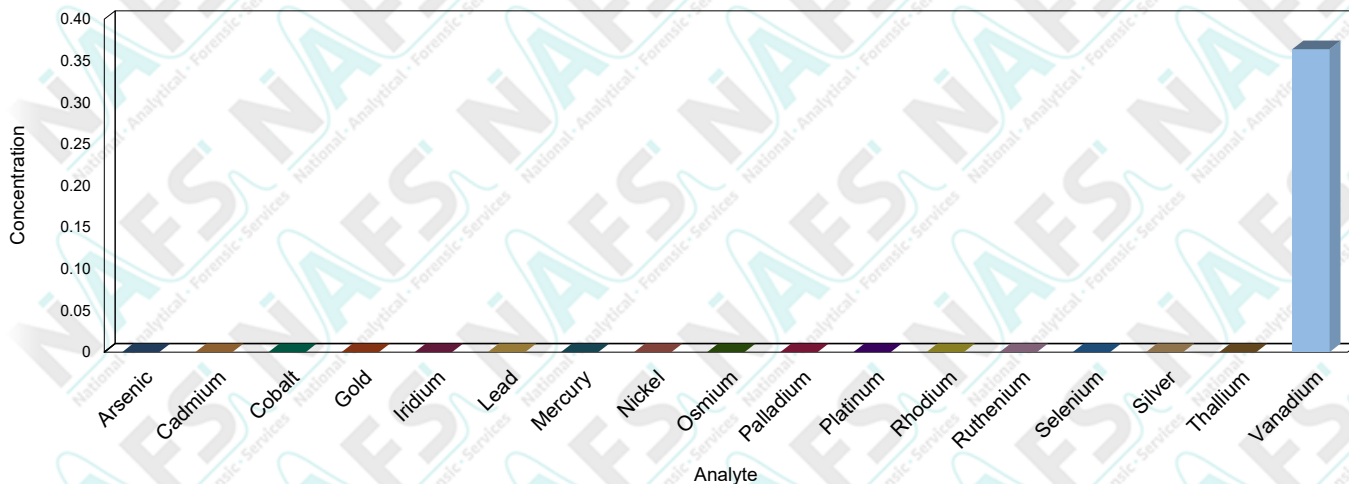
\*ND (Not Detected)  
\*The current test method version is Validated  
\*Standard Deviation (Uncertainty of measurement of applicable duplicate sample)  
\*Safety Limits (Regulatory limits specified are according to the United States pharmacopeia where applicable)

**Test Name:** Heavy Metal Class 1,2 Analysis (200603-004-002)

**Specification:** USP Specification (Oral)  
**Test Method:** \*TM005.2  
**Sampling Method:** SH007

Analyte	Results	*Std Dev.	*Safety Limits
Silver	ND ppm	ppm	< 15 ppm <b>PASS</b>
Arsenic	ND ppm	ppm	< 0.1 ppm <b>PASS</b>
Gold	ND ppm	ppm	< 10 ppm <b>PASS</b>
Cadmium	ND ppm	ppm	< 0.5 ppm <b>PASS</b>
Cobalt	ND ppm	ppm	< 5 ppm <b>PASS</b>
Mercury	ND ppm	ppm	< 3 ppm <b>PASS</b>
Iridium	ND ppm	ppm	< 10 ppm <b>PASS</b>
Nickel	ND ppm	ppm	< 20 ppm <b>PASS</b>
Osmium	ND ppm	ppm	< 10 ppm <b>PASS</b>
Lead	ND ppm	ppm	< 0.5 ppm <b>PASS</b>
Palladium	ND ppm	ppm	< 10 ppm <b>PASS</b>
Platinum	ND ppm	ppm	< 10 ppm <b>PASS</b>
Rhodium	ND ppm	ppm	< 10 ppm <b>PASS</b>
Ruthenium	ND ppm	ppm	< 10 ppm <b>PASS</b>
Selenium	ND ppm	ppm	< 15 ppm <b>PASS</b>
Thallium	ND ppm	ppm	< 0.8 ppm <b>PASS</b>
Vanadium	0.364 ppm	+/- 0.008 ppm	< 10 ppm <b>PASS</b>

**Analyst:** Paul Myburgh 2020/06/04 15:05:03



\*ND (Not Detected)  
\*The current test method version is Validated  
\*Standard Deviation (Uncertainty of measurement of applicable duplicate sample)  
\*Safety Limits (Regulatory limits specified are according to the United States pharmacopeia where applicable)

\*OR (Outside Range) For quantitative analysis, calibration range is the concentration within which the analysis method is accurate. For limit tests the a single point calibration is employed with a range of +/-15% across the specification limit. An OR analyte flag signifies that only semi-quantitative data has been reported.



**Test Name:** Terpenes (200603-004-002)

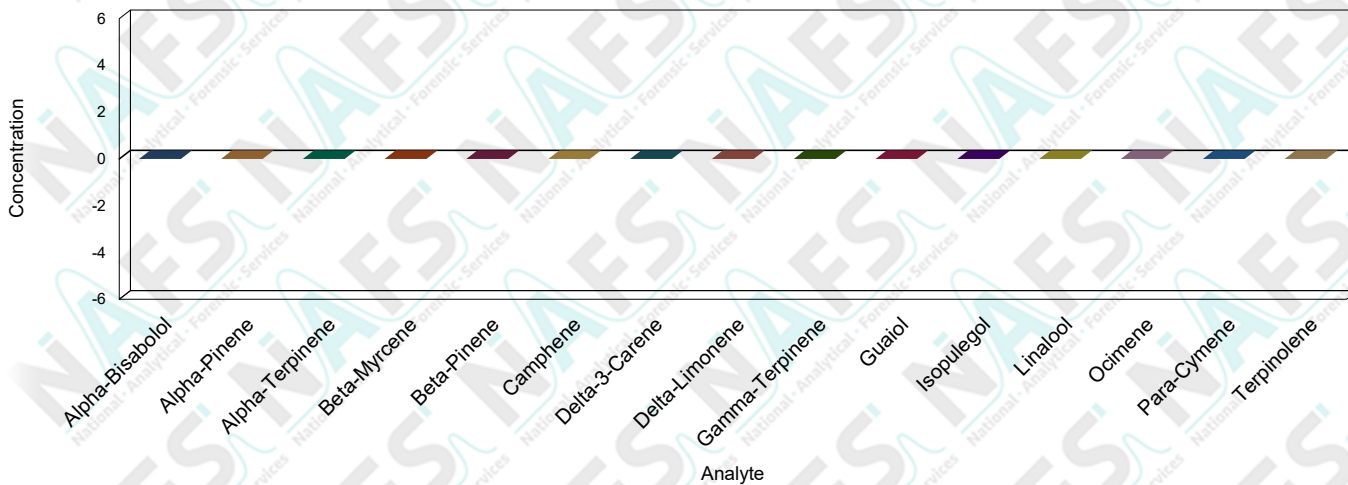
**Specification:** USP Specification (Oral)

**Test Method:** \*TM003.5

**Sampling Method:** SH007

Analyte	Results	*Std Dev.	*Safety Limits
Alpha-Bisabolol	ND mg/g	mg/g	N/A
Alpha-Pinene	ND mg/g	mg/g	N/A
Alpha-Terpinene	ND mg/g	mg/g	N/A
Beta-Myrcene	ND mg/g	mg/g	N/A
Beta-Pinene	ND mg/g	mg/g	N/A
Camphene	ND mg/g	mg/g	N/A
Delta-3-Carene	ND mg/g	mg/g	N/A
Delta-Limonene	ND mg/g	mg/g	N/A
Gamma-Terpinene	ND mg/g	mg/g	N/A
Guaiol	ND mg/g	mg/g	N/A
Isopulegol	ND mg/g	mg/g	N/A
Linalool	ND mg/g	mg/g	N/A
Ocimene	ND mg/g	mg/g	N/A
Para-Cymene	ND mg/g	mg/g	N/A
Terpinolene	ND mg/g	mg/g	N/A

**Analyst:** Thembani Twala      2020/06/08 09:51:40



\*ND (Not Detected)

\*The current test method version is Un-Validated

\*Standard Deviation (Uncertainty of measurement of applicable duplicate sample)

\*Safety Limits (Regulatory limits specified are according to the United States pharmacopeia where applicable)

**Interpretations and Opinions:**

---

None

**Additions, Deviations & Exclusions:**

---

None

*It should be noted that NAFS will only analyze the sample/s received. This sample cannot be regarded as representative of entire batch or crop. It is the responsibility of the client to ensure a representative sample is taken in an appropriate tamper proof sample container. NAFS cannot be held liable for negligent handling, storage and transport of client samples, prior to receipt. Any complaints may be directed toward NAFS using info@nafs.co.za (QA005)*

**Laboratory Manager**

**Released By:** Henrick Viviers

**Released On:** 2020/06/10 09:08:04

*This certificate of analysis shall not be reproduced except in full, without written approval of NAFS. The information contained in this communication from the sender is confidential. It is intended solely for use by the recipient and others authorized to receive it. If you are not the recipient, you are hereby notified that any disclosure, copying, distribution or taking action in relation of the contents of this information is strictly prohibited and may be unlawful. The results obtained may be used for anonymous statistical research purposes. NAFS cannot be held liable for any loss or damage arising from, directly or indirectly related to, sample test*